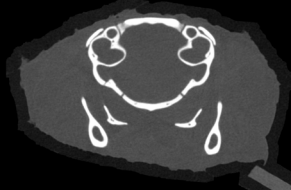


Download
3D Slicer

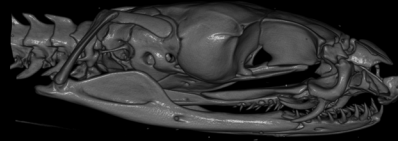
Install extensions
SlicerMorph, Sandbox

Download sample dataset
UF-herp-52552-head

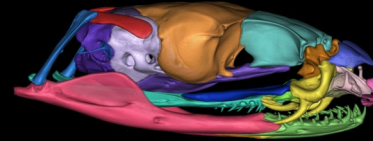
User interface and
extension manager (5.53)



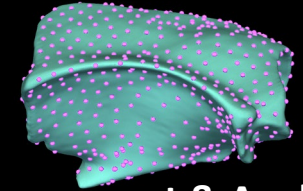
Data import, manipulation, export



Visualization







Segmentation & models





Measurement & Analyses

Import volumes

-  Add data (1.28)
-  Add DICOM data (1.22)
-  Image Stacks (3.10)
-  GEVollImport (2.11)

Modify volumes

-  Transforms (12.06)
-  Crop Volume (2.30)

Convert/export volumes

-  Exporting & Saving Data (3.23)

Visualize volume







-  Window/Level (1.16)
-  Volume Rendering (2.38)
-  Scalar Color/Opacity Map (2.43)

Image extras

-  3D Working Space (4.33)
-  Lights (2.50)
-  2D Viewer Settings (2.35)



Multi-volume rendering

-  Colorize Volume (2.16)



Segment Editor (18.11)

-  Thresholding (3.17)
-  Paint/Erase (3.56)
-  Scissors (1.13)
-  Margin (Grow/Shrink) (1.27)
-  Logical Operators (1.53)
-  Islands (4.03)
-  Floodfill (2.21)

Meshes

-  Convert Segments to Models & Export (2.02)
-  Edit Models (13.26)

Characterization

-  Segment Statistics (2.09)
-  Markups (12.58)

Shape analysis

-  SlicerMorph (12.30)

Get help!

Join Slicer discourse

By Dr. Jaimi Gray
graysvertebrateanatomy.com